

CGCS Agenda- Friday, Sept. 13

11am, 140 Toomey Hall

- > Graduate Enrollment Update
- > Chancellor's Distinguished Fellowship – nomination process update
- > Experience S&T
- > MS Non-Thesis Application Update/Discussion
- > MyBest TOEFL (superscore)
- > Discussion of Admission Materials
- > Fall Recruiting Trips
- > GTA Tuition Clarification
- > Policy Memo II-20 Update
- > C, F, and I Letter Update
- > Office of Graduate Studies Move
- > New Staff in Graduate Studies
- > New Graduate Student Orientation Recap
- > Upcoming Events
- > Reminders & Announcements



Graduate Enrollment Update

> End of 3rd Week:

- 1633 Total Graduate Students Enrolled (FS18: 1759; ↓7.2%)
 - > 929 On-Campus (FS18: 1028; ↓9.6%)
 - 623 Doctoral
 - 306 Master's (includes certificates)
 - > 704 Distance (FS18: 731; ↓3.7%)
 - 37 Doctoral
 - 667 Master's (includes certificates)

> International Check-Ins (as of 9/10)

- MS: 33 check-ins (FS18: 48; FS15: 139)
- PhD: 44 check-ins (FS18: 54; FS15: 43)

Chancellor's Distinguished Fellowship

- > Instead of January 15 deadline for nominations and then award in March for CDF, moving to rolling nominations and awards.
- > Intend to meet monthly starting in October to review nominations and award soon after
- > CDF nomination process will change. More information coming via email in the next couple of weeks
- > Would like to invite all CDF nominees to visit campus through Experience S&T!



Experience S&T

- > Reminder that the funded visit program for prospective doctoral students is available!
- > Student Eligibility:
 - 3.25 minimum Cumulative GPA (on a 4.0 scale)
 - Completed Experience S&T application (found [here](#))
 - US Citizen, US National, or permanent resident, or an international student currently residing in the US
 - Junior, senior or a master's student (or have completed undergraduate studies or a master's degree, but not began a doctoral program) and be eligible to pursue a doctoral degree

Experience S&T

> Reimbursement Information:

- If you live within the state of Missouri, your meals and hotel will be provided. In addition, you will be reimbursed up to \$300 depending on your mode of transportation.
- If you live outside of the state of Missouri, your meals and hotel will be provided. In addition, you will be reimbursed for transportation expenses up to the amount listed below, based on the state of your current institution:
 - > \$300 for AR, IA, IL, KS, KY, OK, MO, NE, TN
 - > \$500 for AL, GA, IN, LA, MI, MN, MS, NC, OH, SC, TX, VA, WI, WV
 - > \$650 for AK, AZ, CA, CO, CT, DE, DC, FL, HI, ID, MA, MD, ME, MT, ND, NH, NJ, NM, NV, NY, OR, PA, RI, SD, UT, VT, WA, WY



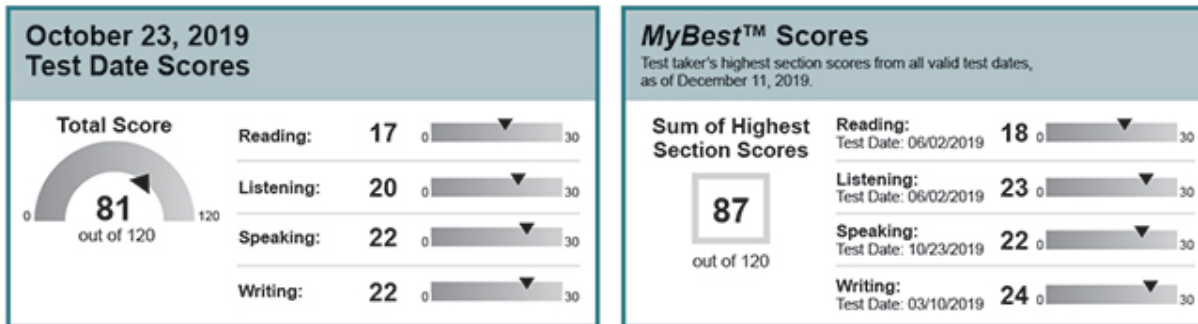
MS Non-Thesis Application Update/Discussion

- > We request that for non-thesis MS students you no longer require recommendation letters.
- > If you provide Grad Studies with your minimal admission criteria (GRE, TOEFL, GPA) we can admit the students without departmental involvement.
- > To deal with international transcripts and GPA calculation we are planning to use Educational Perspectives, a company that provides Universities with an analysis of international transcripts. I am enclosing two examples of their transcript analysis. We also request that you allow us to use Educational Perspectives instead of using departmental resources to analyze the international transcripts of non-thesis MS applicants. All the costs will be borne by Grad Studies.
- > We will only admit non-thesis MS students whose undergraduate degree is identical to the one they are applying to for graduate studies. In all other cases we will refer the applicants to the department. Over time we will build a number of degree equivalences (since Universities may name the same degree differently than S&T).
- > We will only admit a total number of non-thesis MS students that you tell us.

MyBest TOEFL (superscore)

How Do They Work?

MyBest scores — sometimes generically called superscores — are the combination of an applicant's best scores for each test section from all of their valid TOEFL scores in the last 2 years. All TOEFL iBT score reports sent after August 1, 2019, will include both the applicant's *MyBest* scores and the scores from their selected test date, like in this example:



How Are They Helpful?

Here are some important things to know about *MyBest* scores:

- ***MyBest* scores are valid.** Research from the testing experts at ETS shows that *MyBest* scores and single test date scores are both valid measures of English-language proficiency.
- **You can widen your pool of qualified applicants** that meet your English-language requirements when you let students show their best performance with *MyBest* scores.
- **Using *MyBest* scores is easy.** The TOEFL iBT score scale remains the same, and there is no need to change your score requirements.

MyBest TOEFL (superscore)

> More info from ETS:

https://www.ets.org/c/41866/mybest.html?WT.ac=toefl_mybest_vanity_190308&utm_source=various&utm_medium=vanity&utm_campaign=TOEFL_MyBest

Discussion of Admission Materials

- > Recommendations letters
- > GRE Scores
- > TOEFL/IELTS/PTE Scores
- > Transcripts

Fall Recruiting Trips

- > Arkansas:
 - 9/10 Arkansas Tech Grad Fair
 - 9/11 University of Arkansas Grad Fair
 - 9/25 Arkansas State University Info Table
 - 10/22 Univ. of Ark. – Little Rock Info Table
 - 10/23 Univ. of Central Ark. STEM Grad Fair
- > Texas:
 - 9/16 University of Texas at Dallas Grad Expo
 - 9/17 Midwestern State University visit
 - 9/17 Univ. of North Texas Eng. Info Table
 - 9/18 Univ. of Texas at Arlington Grad Fair
 - 9/19 University of North Texas Grad Fair
- > Missouri:
 - 9/17 Univ. of Central MO Info Table/Session
 - 9/19 Northwest MO State Univ. Info Table
 - 9/24 Culver Stockton Fair
 - 9/25 Truman State University Grad Expo
 - 10/2 Saint Louis University Grad Fair
- > Kansas:
 - 9/18 University of Kansas Engineering Career Fair
- > Indiana:
 - 9/23 Purdue Big 10 Grad Expo
 - 9/23 Rose Hulman Grad Fair
- > Tennessee:
 - 9/26 University of Memphis Grad Fair
 - 9/26 Christian Brothers University Grad Fair
- > Arizona:
 - 10/1 Embry-Riddle – AZ Graduate Fair
 - 10/2 University of Arizona Graduate Fair
- > Illinois:
 - 10/16 University of Illinois Grad Fair
 - 10/15 Northern IL Univ. – Dekalb Info Table
 - 10/16 Univ. of Illinois – Chicago Info Table
 - 10/16 IL Institute of Technology Info Session
- > Georgia:
 - 10/29 Clark Atlanta University Info Table
 - 10/30 Spelman College/Morehouse College Grad Fair
- > Alabama:
 - 10/31 Tuskegee University Info Table
- > OTHER:
 - 10/11 Tau Beta Pi Eng. Honor Society Fair (OH)
- > PENDING:
 - University of Tulsa
 - University of Tennessee - Martin
 - University of Mississippi
 - Lincoln University
 - Missouri State Co-op Engineering Program
 - Oklahoma State University
 - University of Missouri – St. Louis
 - University of Missouri – Kansas City
 - University of Missouri – Columbia
 - Lindenwood University
 - Maryville University
 - Harris Stowe State University
 - University of Oklahoma
 - Tennessee Tech
 - University of Tennessee – Knoxville



GTA Tuition Clarification

Policy Memo II-20 Update

- > Revised to ensure equity among all students
- > Became effective August 1

C, F, and I Letter Update

- > New process – no longer sending personalized letters

Office of Graduate Studies Move

- > Moved last week to 216 Centennial Hall
- > Traded spaces with Global (now in G8 Norwood)

New Staff in Graduate Studies

- > Hannah Coffman, Technical Editing Temp
 - Started 6/3
- > Huong Pham, Graduate Studies Specialist
 - Started 9/3
- > Clarissa Meyer, Recruitment Specialist
 - started 9/9 (replaces Matt Vogeler – went to Registrar's)
- > Sarah Perry, Recruitment Specialist
 - starting 9/30 (replaces Turner Rafter – going to Mizzou)

New Graduate Student Orientation (NGSO) Recap

- > Changed schedule of NGSO
 - 4 different 2 hour options for students to attend
 - > 95 students attended over 4 orientations
 - Graduate Student Resource Fair (open to new and current grad students)
 - > ~150 students in attendance
 - Graduate Faculty and New Graduate Student Social
 - > ~50 in attendance
- > Positive feedback from all who attended (students and presenters)

Upcoming Events – September

- > **Word Tutorial for your Thesis & Dissertation**
Sept. 3, Campus Support Facility 114 - 1pm to 2pm
Learn how to navigate the Word Template for your Thesis or Dissertation.
- > **Patent Pending: Patenting & Licensing your research and technology**
Sept. 9, 1pm to 2pm - Meramec, Havener Center
Hear from the professionals on how to secure and protect your ideas through patents and licenses.
- > **Maximizing your Research Impact and Visibility**
Sept. 25th, 6pm to 9pm, Library103
Explore ways to maximize your impact and increase your visibility as researcher, utilizing ORCID, scholarly profiles, open access, social media, and more. Hosted by Curtis Laws Wilson Library.
- > **Thesis & Dissertation Writing Camp**
Sept. 30th to Oct. 2, 9am to 4pm, McNutt 114
Be guided through the process, the skills, and the specifications in order to complete your thesis and dissertation.
Registration deadline: September 23



JOIN US FOR THESIS & DISSERTATION WRITING CAMP

September 30 and October 2, 9am–4pm

Register by September 23

SESSIONS

Let us help you format, prepare for, and actively work on your thesis.



FORMAT

Learn S&T's formatting requirements and how to use our Word & LaTeX templates



PREPARE

Gather all the information you need for a successful thesis/ dissertation



WRITE

Overcome procrastination by setting goals and building a peer writing community

Monday, September 30th Formatting Day

Wednesday, October 2nd Prep Day

9 AM	Orientation	Literature Review How-To's
10AM	Formatting Requirements	Mendeley / IRB Approval
11AM	LaTeX Tutorial	Copyright for the Grad Student
NOON	Lunch	Lunch
1 PM	Word Tutorial	Tips for the Defense
2 PM	Writing Session	Writing Session
3 PM	Writing Session	Writing Session

REGISTRATION

Registration is free, and lunch is provided.

Registration deadline is September 23. Limited to 30 participants.



HOW TO REGISTER

- Scan the QR code with your mobile device
- Fill in your information
- Choose which session(s) to attend

Please note that your attendance is expected at the sessions for which you've registered. If you are unable to attend, please notify the Office of Graduate Studies at least one week prior to the scheduled event.

Upcoming Events – October

- > **3 Minute Thesis Orientation**
Oct. 3rd, 4pm to 5pm, Meramac-Gasconade
The first step in participating in an international competition for graduate students to develop and showcase their research in only 3 minutes!
- > **Thesis & Dissertation Formatting Presentation**
Oct. 14th, 1pm to 2pm, Carver Havener Center
Learn the ends-and-outs of the Format Checking Process and the Missouri S&T specifications for your Thesis and Dissertation.
- > **Audience Focused Communication: Presenting Ideas & Research to Different Levels**
October 17th, 3pm to 4pm, Meramac Havener Center
Learn how to present complex research to every type of person to create the biggest impact from your work.
- > **Graduate Studies Spooky Fall Festival**
Oct. 25th, 11am to 1pm, Missouri S&T Puck
Family and Friends can join with Graduate Studies to celebrate the Fall with a costume contest for the coolest, spookiest kid at the Puck! Candy, prizes, and games.



Upcoming Events – November

- > **3 Minute Thesis Semi-Finals**

Nov. 6th, Location & Date: TBA

- > **3 Minute Thesis Finale**

Nov. 7th, 4pm to 5:30pm, St. Pats. Ballroom

See Missouri S&T's brightest student represent their research in 1 slide for a panel of non-STEM judges in only 3 minutes!

Reminders & Announcements

- > Technical Editing now accepting requests online!
 - <https://grad.mst.edu/currentstudents/editing/>
- > Form 1A/5A – Due September 13 (today!)
- > Form 1-B – Due September 27

Thanks for attending!

Next meeting:

Oct. 11, 2019

11am-12pm

140 Toomey Hall

